

Thanks for Choosing Dinstar's DAG1000-4S VoIP Gateway!

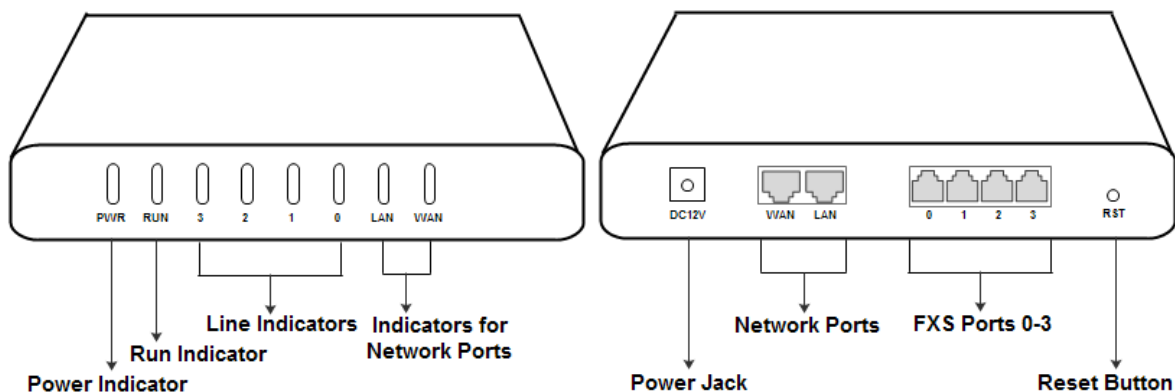
Please read this installation guide carefully before install the gateway. If you need any technical support, please contact us.

Tel: +86-755-61919966.

Email: support@dinstar.com

Website: www.dinstar.com

1 DAG1000-4S Appearance



2 Number of Ports

Port Type Gateway	WAN	LAN	FXS (RJ11)	FXS (RJ21)	FXS (RJ45)
DAG1000-4S	1	1	4	0	0

3 Description of Indicators

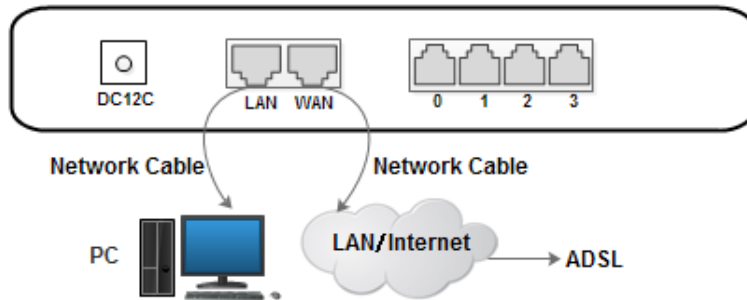
Indicator	Name	Status	Description
PWR	Power Indicator	On Green	The gateway is powered on.
		On Dull	There is no power supply or power supply is abnormal.
RUN	Running Indicator	Slow Flash	The gateway is running properly.
		Quick Flash	SIP account is registered successfully.
		No Flash/On Dull	The gateway is running improperly.
FXS	Line Indicators	On Green	FXS port is currently occupied by a call.
		On Dull	FXS port is idle or FXS port is faulty
WAN/LAN	Indicator for WAN Port/LAN Port	On Green with Flash	The gateway is properly connected to network.
		On Dull	The gateway is not connected to network or the connection is improper.

4 Installation Attentions

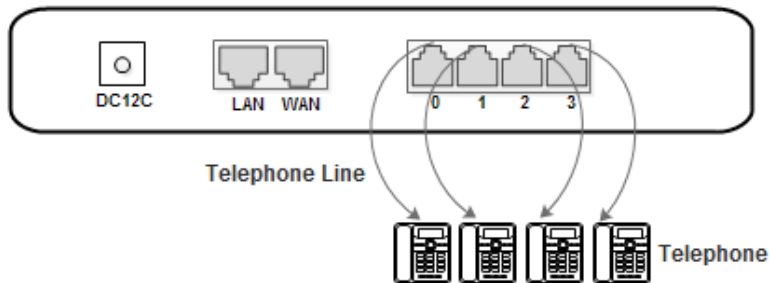
1. Please separate power cables with telephone lines so as to reduce the interference with telephone calls.
2. The adapter of DAG1000-4S accepts DC input voltage of 12V. Please ensure stable and safe power supply.
3. To guarantee stabilized running of DAG1000-4S, please ensure there is enough network bandwidth.
4. To ensure the gateway can work normally, you'd better install the gateway in a device room where temperature and humidity are appropriate.
5. You'd better place the gateway on a flat surface or a device cabinet. To effectively maximize heat dissipation, do not pile up the gateway with other devices .

5 Connection Instruction

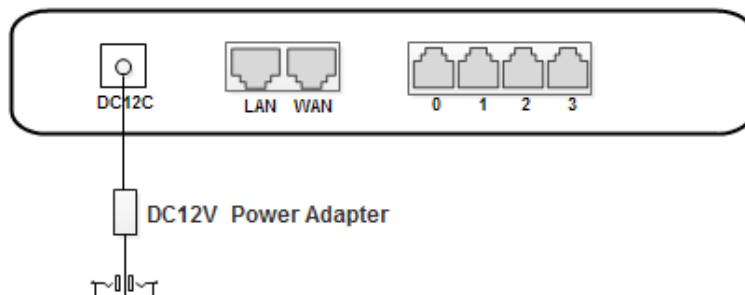
Network Connection



Telephone Connection



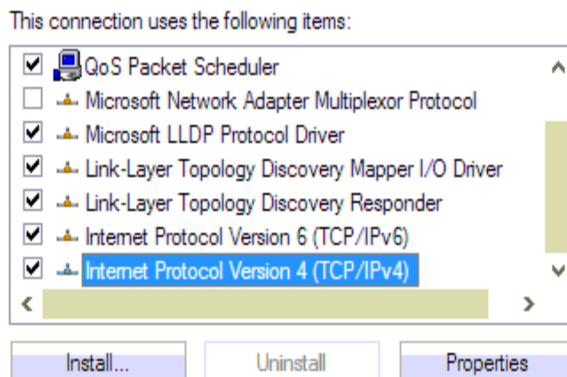
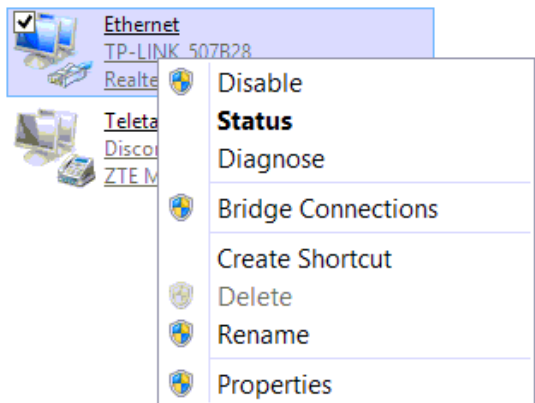
Power Connection



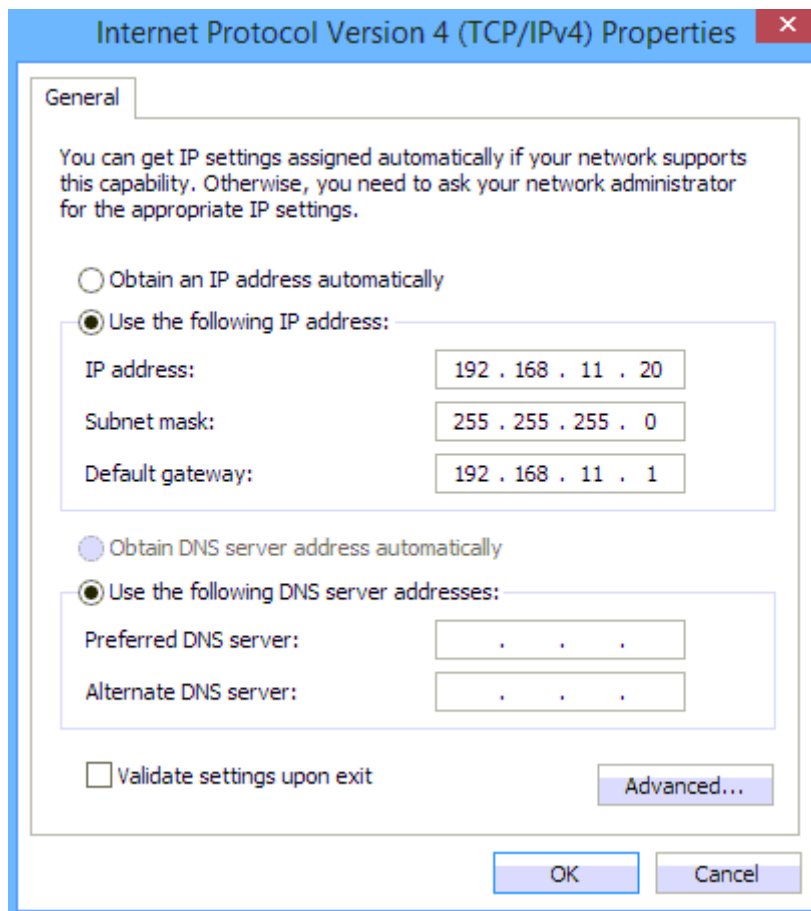
6 Modify PC's IP Address

Modify the IP address of PC to make it at the same network segment with the DAG1000-4S gateway, since the default IP address of the gateway is 192.168.11.1.

- (1) On the PC, click “Network → Properties”. (2) Double-click “Internet Protocol (TCP/IPv4)”.



- (3) Select “Use following IP address”, and then enter an available IP address which is at the same network segment with “192.168.11.1”.



7 Log into DAG1000-4S

Open a web browser and enter the IP address of DAG1000-4S (the default IP is 192.168.11.1). Then the login GUI will be displayed. Both the default username and password are admin.

8 Modify IP Address of DAG1000-4S

If you want to modify the IP address of DAG1000-4S, please click “Network → Local Network” in the navigation tree on the left, and then input new IP address and DNS server address on the displayed interface.

9 Configure SIP Server Information

Log into DAG1000-4S, and then click **SIP Server** in the navigation tree and then enter the address of the SIP server which is to be registered. Click **Save** in the last.

SIP Server

Primary SIP Server

Primary SIP Server Address	<input type="text" value="172.16.95.110"/>
Primary SIP Server Port (Default: 5060)	<input type="text" value="5060"/>
Registration Expires (Default: 1800)	<input type="text" value="1800"/> s
Heartbeat	<input type="checkbox"/> Enable

Click **Port** in the navigation tree on the left, and then click **Add**. Input the SIP account and authentication password assigned by the SIP server.

Port Add

Port	<input type="text" value="1"/>
Disable Port	<input type="checkbox"/>
Registration	<input checked="" type="checkbox"/> Enable
Primary Display Name	<input type="text" value="10001"/>
Primary SIP User ID	<input type="text" value="10001"/>
Primary Authenticate ID	<input type="text" value="10001"/>
Primary Authenticate Password	<input type="text" value="10001"/>
Secondary Display Name	<input type="text"/>
Secondary SIP User ID	<input type="text"/>
Secondary Authenticate ID	<input type="text"/>
Secondary Authenticate Password	<input type="text"/>

Click **Save** and then restart the DAG1000-4S gateway for the new configurations to take effect.

10 Basic Operations

- Dial *158# to query the IP address of LAN port of DAG1000-4S;
- Dial *159# to query the IP address of WAN port of DAG1000-4S;
- Dial *114# to query the telephone number of a FXS port;
- Dial *165*000000# to restore default IP address, username and password;
- Restore factory default settings: (1) dial *166*000000#; (2) Press the RST button for 7 seconds; (3) Log into the gateway and then click “**Tools → Factory Reset**”. Then click **Apply**, and restart the gateway.
- Dial *111# to restart DAG1000-4S.

11 Detailed Configuration & Parameter Explanation

This document only provides instructions for quick installation and basic configuration. For detailed explanation of functions and parameters, please make reference to DAG1000-4S VoIP Gateway User Manual, or ask for online technical support.

Honest , Concentrated, Innovative , Open

Website: <http://www.dinstar.com>

Facebook: <https://www.facebook.com/dinstarvoip/>