



SIP Speaker iW30 Quick Installation Guide



Fanvil Technology Co., Ltd
Add: 4F, Block A, Building 1#, GaoXinQi Hi-Tech Park (Phase-II), 67th District,
Bao'An, Shenzhen, China Tel: +86-755-2640-2199 Fax: +86-755-2640-2618
Email: sales@fanvil.com www.fanvil.com



Interface Explanation

Interface Diagram

Icons	Description	Feature	Picture
Power	DC Power Input port	Input Range: +12V~+24V DC (Notice: Plus-n-Minus connection of the Power)	
WAN	WAN port	10M/100M Adaptive Ethernet port, connected to the network	
LAN	LAN Port	10M/100M Adaptive Ethernet port, connected to the computer (which can be configured to routing mode, or to bridge mode) or IPC camera.	
NET	The Network Light	1. The network get through, and the light put out 2. The network can't get through, and the light blink fast within 0.5s 3. The network get through but registration fail, and the light blink slowly with 1s	
VOLUME /RST	Button	1. Press and hold volume down button for 3 seconds; the door phone would report the IP address by voice, and the voice volume will go down by single press the button. 2. Long press the volume plus button for 10 seconds, the speaker issued a rapid beep, and then quickly press the three volume plus the button, beep stopped. Wait 10 seconds, successfully switch to dynamic IP after the system automatically voice broadcast IP address. Switching again will become a fixed IP address, and the voice volume will go up by single press the button. 3. Press the reset button for 3 seconds, the device automatically restarts and restores the factory configuration.	
AUDIO	Audio output	Connect audio port to output the audio headphones or external speakers.	

Fanvil Technology Co., Ltd
Add: 4F, Block A, Building 1#, GaoXinQi Hi-Tech Park (Phase-II), 67th District,
Bao'An, Shenzhen, China Tel: +86-755-2640-2199 Fax: +86-755-2640-2618
Email: sales@fanvil.com www.fanvil.com



SIP Speaker Configuration

Step One: Connect to the network

The product factory default network mode is static IP address 192.168.1.128. Connect the end of network cable to the device WAN port, another end is connected to the LAN port of the router, then the hardware connection is completed. Normally, it is suggested to set the device network to DHCP mode.

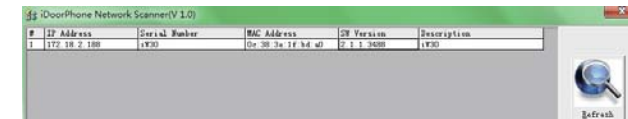


Fanvil Technology Co., Ltd
Add: 4F, Block A, Building 1#, GaoXinQi Hi-Tech Park (Phase-II), 67th District,
Bao'An, Shenzhen, China Tel: +86-755-2640-2199 Fax: +86-755-2640-2618
Email: sales@fanvil.com www.fanvil.com



Step Two: Get the device IP Address:

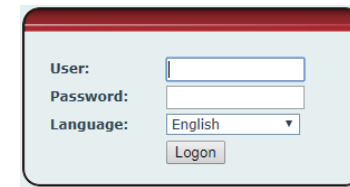
- Method 1:
Use the default IP scanner tool to get it: Network Scanner
1) Install the scanner tool: Network Scanner;
(Download address <http://download.fanvil.com/tool/iDoorPhoneNetworkScanner.exe>)
2) Ensure the working computer (installing IP scanner tool, exe.) is in the same local network with the corresponding device;
3) Run the tool (Network Scanner.exe), to search the IP address of corresponding device within the network.



- Method 2:
Long Press " " button for 3 seconds, the intercom will report the IP numbers by itself.

Step Three: Log in the WEB admin interface of the device

Input IP address (e.g.: <http://192.168.1.128>) in the Web browser, the default user name: admin, password: admin.



Step Four: Modify the device description



Step Five: Add SIP account



Step Six: The Volume adjustment

Set the device volume as following guide, and click the [Apply] button after setting completed.

- Speakerphone Volume:** The setting of speaker volume for normal call
- Mic Input Volume:** The setting of microphone input volume
- Broadcast Output Volume:** The setting of speaker volume for broadcast server's audio source like background music
- Signal Tone Volume:** The volume setting for signals like call ringing, correct indication tone, error indication tone and others



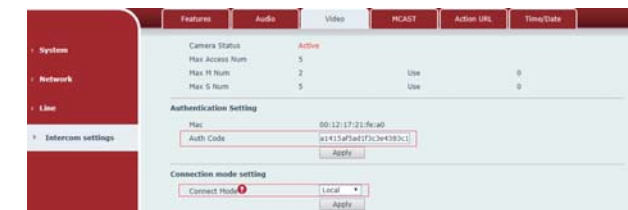
Step Seven: Set Speaker Settings mode

The default Speaker Setting mode is <Panel Speaker>, and the output power limitation is 10W. If the device need be used for broadcasting, pls adjust the Speaker Setting mode to <External Speaker>, and select the appropriate output power according to the input power voltage:
PoE for 10W, 12V/2A for 10W, 18V/2A for 20W, 24V/2A for 30W

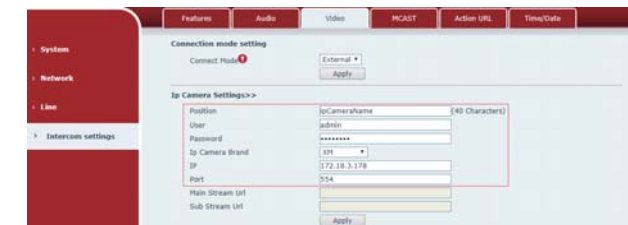


Step Eight: Set the camera (Pls skip if NO camera connected)

<Local> mode: Connect the Fanvil Camera module. You just need to input the factory authentication code of the Fanvil Camera module to active the function.



<External> mode: To connect a non-original camera, pls connect the camera into another network switch LAN port. Configure the following parameters and click [Apply] after all settings done.
Pls ensure the SIP speaker and External Camera in the same Local Network.



Fanvil Technology Co., Ltd
Add: 4F, Block A, Building 1#, GaoXinQi Hi-Tech Park (Phase-II), 67th District,
Bao'An, Shenzhen, China Tel: +86-755-2640-2199 Fax: +86-755-2640-2618
Email: sales@fanvil.com www.fanvil.com